

## 24.24M Field Reprogramming Instructions

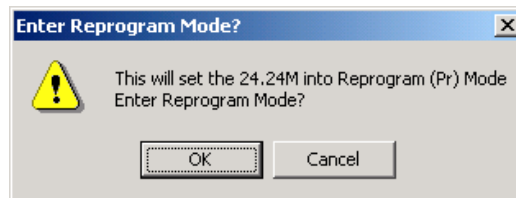
### Introduction:

The 24.24M Matrix Processor is capable of field reprogramming upgrades through Ashly Audio's Protea System Software. This document gives detailed instructions and precautions on this procedure. Read all instructions before proceeding.

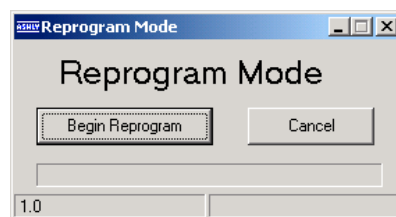
### Warning:

When attempting a reprogram of a 24.24M, ensure that no other units are connected to the Data In or Data Out Euroblock connectors. Only one 24.24M may be programmed at a time.

- 1.) Obtain binary file from the Ashly Audio Web site ([www.ashly.com](http://www.ashly.com)). The file name will be "2424M\_programFile\_XY.bin" where XY represents the version number of the 24.24M firmware program.
- 2.) Ensure Data Connections are correct. Nothing should be connected to the Data In or Data Out Euroblock connectors, the RS232 configuration switch on the 24.24M back panel should be in the out position, and the PC should be connected via one of its comm ports to the RS232 port on either the front or back panel of the 24.24M.
- 3.) Ensure the 24.24M is powered on.
- 4.) Ensure all settings on Protea System Software are correct and then Enable Communications from the Communications Menu.
- 5.) It is recommended that you backup your 24.24M presets to the PC at this point. This can be done by clicking File, Trigger Bulk Preset Dump from Protea, or saving individual presets by clicking File, Trigger Preset Dump from Protea. When the 24.24M is reprogrammed it will not lose preset data, however this is recommended as a safety precaution. For further instructions on backing up presets, see the 24.24M Operating Manual.
- 6.) To Begin the reprogramming process from Protea System Software, click Options, Reprogram 24.24M. This will warn you that it is about to set the 24.24M into Reprogram Mode. While in Reprogram Mode, The 24.24M will continue processing audio signals, however you will be unable to control the 24.24M with the software. While in Reprogram Mode "Pr" will be displayed on the front panel display.



- 7.) At this point, a dialog box will ask for the binary file. Browse for the new 24.24M program binary (.bin) file in the Select Binary File dialog box and click Open. Note: incorrect files will not be processed.
- 8.) Protea System Software is now ready to reprogram the 24.24M. You will see the following dialog box.



- 9.) Select Begin Reprogram. When reprogramming is complete, the 24.24M will reset automatically, mute the audio for about 2 seconds, then continue communications with Protea System Software. At this point the 24.24M has been reprogrammed successfully.

**Problems/ Concerns/ Questions:** Contact Ashly Service Dept. [service@ashly.com](mailto:service@ashly.com) or 800.828.6308