

Protea^{ne} mobile

Introduction:

Protea^{ne} mobile is a software application enabling you wireless control of PE-Series amplifiers and the DSP-1 and DSP-2 Option Cards for the PE-Series amplifiers.

PDA Requirements:

PDA running Windows Mobile 5 or greater
802.11b or greater

Other Requirements

Wireless router or Access Point
Protea^{ne} Product

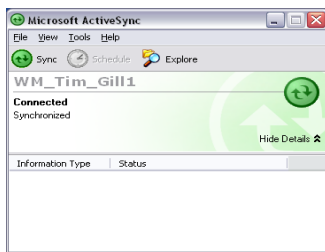
Tested PDAs

HP – iPAQ rx1950
Dell - Axim X51v

Installation:

Step 1: Follow Factory instructions for connecting the PDA to a PC.

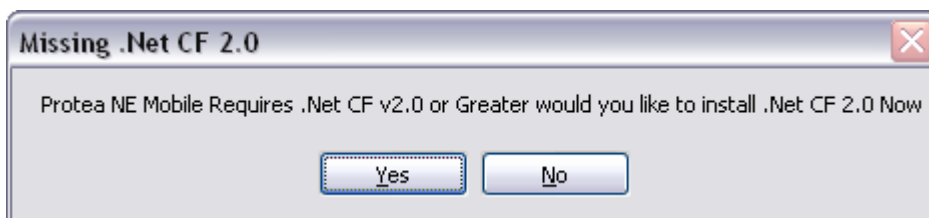
This should include setting up Microsoft Active Sync Version 4.0 or higher. PDA must be connected the PC for installation to complete. Active Sync looks something like the following screen.



Step 2: Download Protea^{ne} Mobile Software.

Download the file folder pne-mobile.zip to a new folder on your computer. This is an 18M file, please be patient. Unzip the file. You will now have the pne-mobile-setup.exe and ProteaNEMobileSetup.msi files. Run the pne-mobile-setup.exe program and follow the on-screen instructions

Note: If .Net 2.0 Compact Framework Is Not already Installed on the PDA you are Installing Protea^{ne} Mobile to then you will be prompted to install it.



Clicking Yes Microsoft will install .Net Compact Framework v2.0 onto the PDA. You must "Reset" the PDA after installation is complete and all PDA Screen messages have been acknowledged.