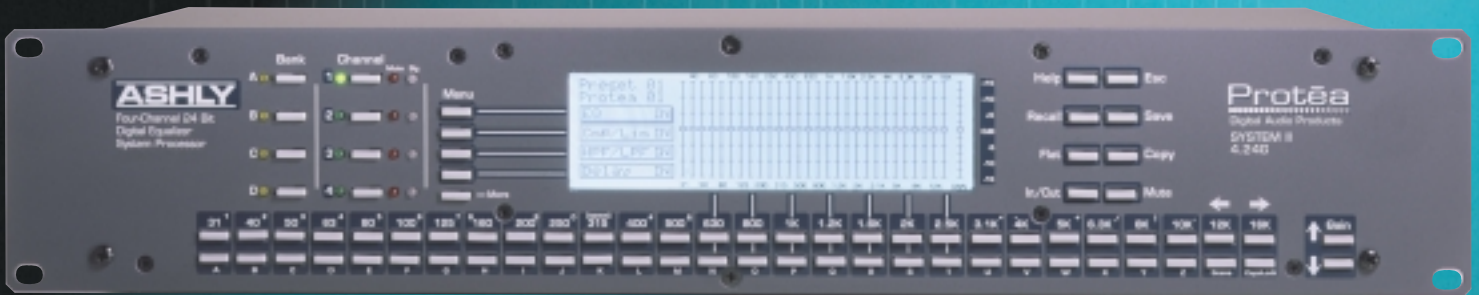


# PROTEQUALIZE

THE NEW PROTĒA SYSTEM II EQUALIZER/SYSTEM PROCESSORS



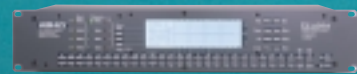
**Equalize the Protea way.** The new Ashly Protea System II digital equalizer/processors offer all the remarkable versatility and control of the original Protea series while providing enhanced sound quality and exceptional signal-to-noise, making them well suited to nearly any application, from F.O.H. to studio recording. We've taken the Protea's already-impressive features—intuitive user interface, extensive control options, expansion possibilities (up to 16 channels of EQ, using 2- and 4-channel slave units), built-in compressor/limiter, and much more—and added a host of truly professional improvements. The System II features a totally redesigned DSP chain (with new 100MHz DSP and 24-bit A/D/A), >110dB dynamic range, <-90dBu signal-to-noise ratio, 1.364-second time delay (quadruple that of the previous Protea!), seamless preset switching to eliminate dropouts, inaudible zipper noise, increased filter adjustment speed, finer compression ratio steps, easier MIDI channel programming, and more. The result is a series of revolutionary equalizer/processors with audiophile quality specs and the versatility for F.O.H. and monitor-mixing, speaker cluster alignment, in-ear monitoring, and even studio recording.

## Original Protea Owners:

Your original 4.24G may be upgraded to include the full features and benefits of the Protea 4.24G System II. Please contact our Customer Service Department for the details.

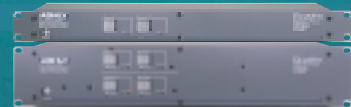
### 4.24G

Digital equalization mother unit—the programmable, four-channel equalizer/processor that lies at the heart of the Protea System II. Can be used to drive any Protea series graphic slave unit, and can be controlled by the 4.24RD remote controller, or via PC software.



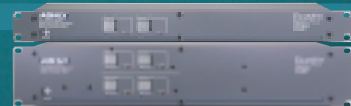
### 2.24GS/4.24GS

Two- and four-channel processors with: 28 graphic filter bands, full-function compressor/limiter, and 1.364-second delay per channel. Controllable by 4.24G or 4.24RD, or via included PC software.



### 2.24PS/4.24PS

Two- and four-channel processors with: 12 parametric filter bands, high and low shelf filters, full-function compressor/limiter, and 1.364-second delay per channel. Controllable via included PC software.



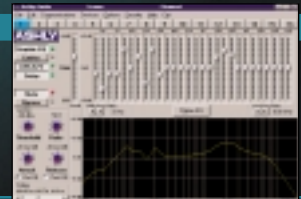
### 4.24RD

Optional full-function remote control with display for Protea graphic processors (4.24G, 2.24GS, 4.24GS).



### Protea System Software

For added versatility, you can control every function of your entire Protea system from your PC. Available FREE on our web site: [ashly.com](http://www.ashly.com)



# ASHLY

Ashly Audio, Inc. • 847 Holt Road, Webster, NY 14580-9103

Toll Free: 800-828-6308 • Tel: 716-872-0010 • Fax: 716-872-0739 • <http://www.ashly.com>

International Agents: E&E Exports, Inc., 17922 Sky Park Circle, Suite P, Irvine, CA 92714 • Tel: 714-440-0760 • Fax: 714-440-0766

In Canada: Gerraudio Distribution Inc • Toll-Free Tel: 888-462-8346 • In Mexico: Comercializadora Gonher S.A. de C.V. • Tel: 52 (17) 16-82-00